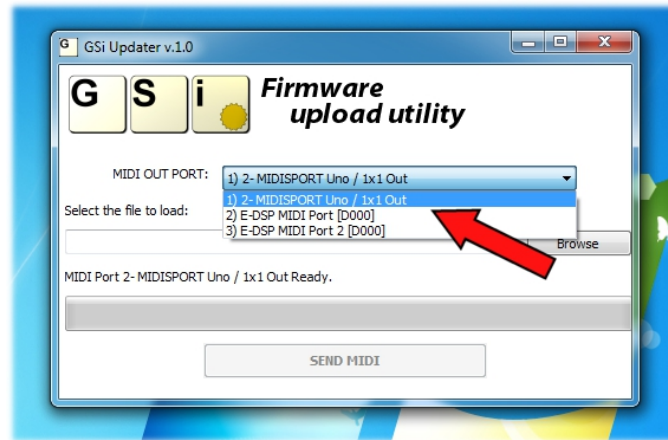




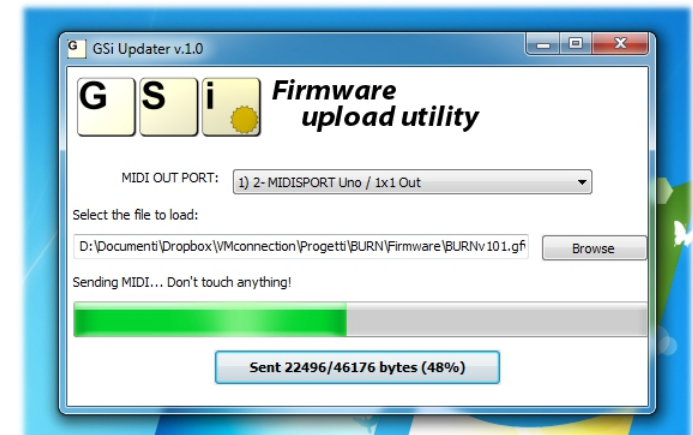
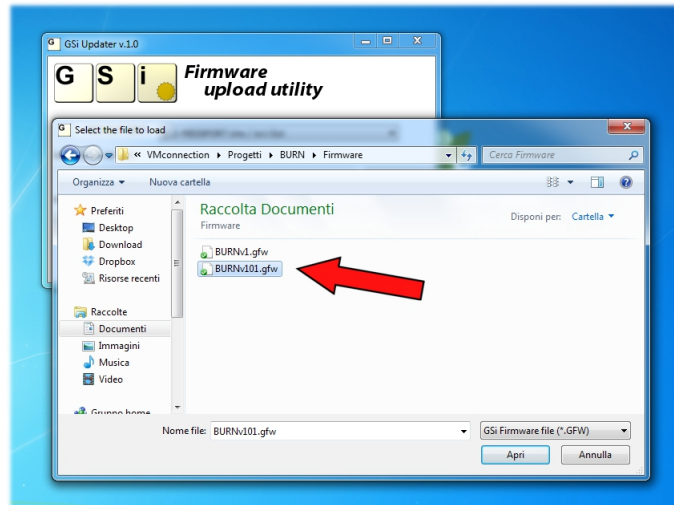
FIRMWARE UPLOAD INSTRUCTIONS

Step 1: Connect the MIDI OUTPUT from your MIDI interface to the MIDI INPUT of the instrument to update.



Step 2: Start the program called "GSi Updater" that you find in the zip file you've just downloaded. There are both the Windows and the Mac versions, each in its own directory, you can't go wrong. It's just an executable, double click on its icon to run it. You can copy this program onto your computer for future uses.

Step 3: Select the MIDI OUTPUT port that you've connected to the instrument you wish to update (*note: your MIDI ports may differ from what you see pictured here*).



Step 4: Click **BROWSE**, locate and load the firmware file that you find in the zip file you've just downloaded, it has the extension *.GFW (GSi FirmWare).

Step 5: Double check that everything is OK and click the button **SEND MIDI**, this will start the upload. The progress bar will indicate the status of the upload. Wait until the end, it should take less than one minute. After the data have been completely sent to the instrument, it will automatically reboot. Please check that everything is working properly. Should you experience strange behaviors, you can try sending the firmware again.