



# DUAL MIDI CONSOLE DMC-122

[www.GenuineSoundware.com](http://www.GenuineSoundware.com)

## **GSi DMC-122 Quick Install Guide**

---

*Congratulations on purchasing the GSi DMC-122, a high quality musical instrument entirely designed and built in Italy. We are confident that the DMC-122 will become an important element of your set-up. You'll discover how easy and fun it is to configure and play so much that you will hardly part with it. We recommend that you read this guide in order to start enjoying your new instrument since the first day and for the years to come.*

*The GSi DMC-122 is a portable dual manual MIDI controller with an organ style interface. It's like having a traditional dual manual organ with loads of features for controlling external MIDI equipments as well as a perfect integration into any DAW for music production and live performance. It offers 20 drawbars, 6 potentiometers, 22 buttons, one encoder, 4 individual MIDI outputs, 3 pedal inputs, pitch and modulation wheels and aftertouch on both keyboards.*

*Thanks to the free Editor application for Windows and OS X, it's very easy to configure any little bit of this instrument in deep detail, such as functions for each single control, custom velocity curves and much more.*

*One thing worth of notice is that the Editor application is also the organ sound engine for the DMC-122 offering the sound of the much acclaimed GSi VB3 version 2. Connect your DMC-122 to your computer, launch the editor and click START AUDIO for instant enjoyment. This guide will show you how in 5 simple steps.*

*And there's more! The back of the DMC-122 offers a slot for an optional DSP sound expansion that will turn your new MIDI controller into a stand-alone self-contained sounding keyboard with a choice of organs, electric pianos and many more simulated or sampled instruments.*

*The GSi Team.*

### **SAFETY INFORMATION**

- Do not open the instrument. The instrument can be opened and repaired only by qualified personnel. Unauthorized opening voids the warranty.
- The supplied power adapter can be used in any Country that has a mains voltage between 100 Vac and 240 Vac. Use only the original power supply.
- Do not expose the instrument to rain and moisture.
- Do not expose the instrument to direct sunlight.
- Do not touch the AC adapter with wet hands.
- Be careful not to infiltrate powders and liquids inside the instrument.
- If liquids get inside the unit remove the power immediately and contact a service center.
- Do not clean using abrasive cleaners as they may damage the surface.
- Please keep all packaging in case you need to transport the instrument to a service center.
- Keep children off the plastic bag.

### **WARRANTY**

- GSi DMC-122 is subject to 12 months manufacturer's warranty.
- Warranty extensions are at the discretion of the retailer.
- Damages caused by misuse, improper maintenance or transportation are not covered by this warranty.
- During the warranty period, the customer is entitled to repair or replacement of any parts considered defective at no charge.
- The possible replacement of the entire product is at the manufacturer's discretion.

This Quick Install Guide will help you getting started with the DMC-122 by explaining step by step the installation procedure of the GSi USB MIDI driver and the DMC-122 Editor for Windows and OS X.

## **STEP 1. Powering on.**

Connect the Power Supply Unit to the power jack on the back of the DMC-122 and press the power button to turn on the instrument. Verify that the instrument is turned on and is working by looking at the LED animation it does during the boot-up phase. The yellow LED on the back of the instrument should also be on.



## **STEP 2. USB connection.**

Connect the USB cable to the output of the DMC-122. Pay attention: the DMC-122 has two USB sockets, one is type A (the rectangular port, next to the DC power inlet), this outlet is used to power other USB equipments such as a portable reader's light or a cell phone. This port carries no data, so don't use it to connect the DMC-122 to your computer. The other port is of type B (the square port, next to the MIDI sockets). Please use this as your main USB MIDI connection.



# STEP 3. Software installation.

Use your computer to download the required software from:  
<http://www.GenuineSoundware.com/Products/DMC-122>



## Installation on Windows

You need to install the MIDI driver first, then the Editor. It is recommended not to install and launch the Editor without having installed the MIDI driver first. Unzip the file containing the driver in a folder of your choice. If you're unsure whether your Windows is running in 32 bit or 64 bit mode, double-click the icon "Setup.cmd". Follow the instructions you see on the screen. Connect the USB cable to your computer only when you're prompted to do so. Once done, launch the Editor installer and follow the instructions on the screen.



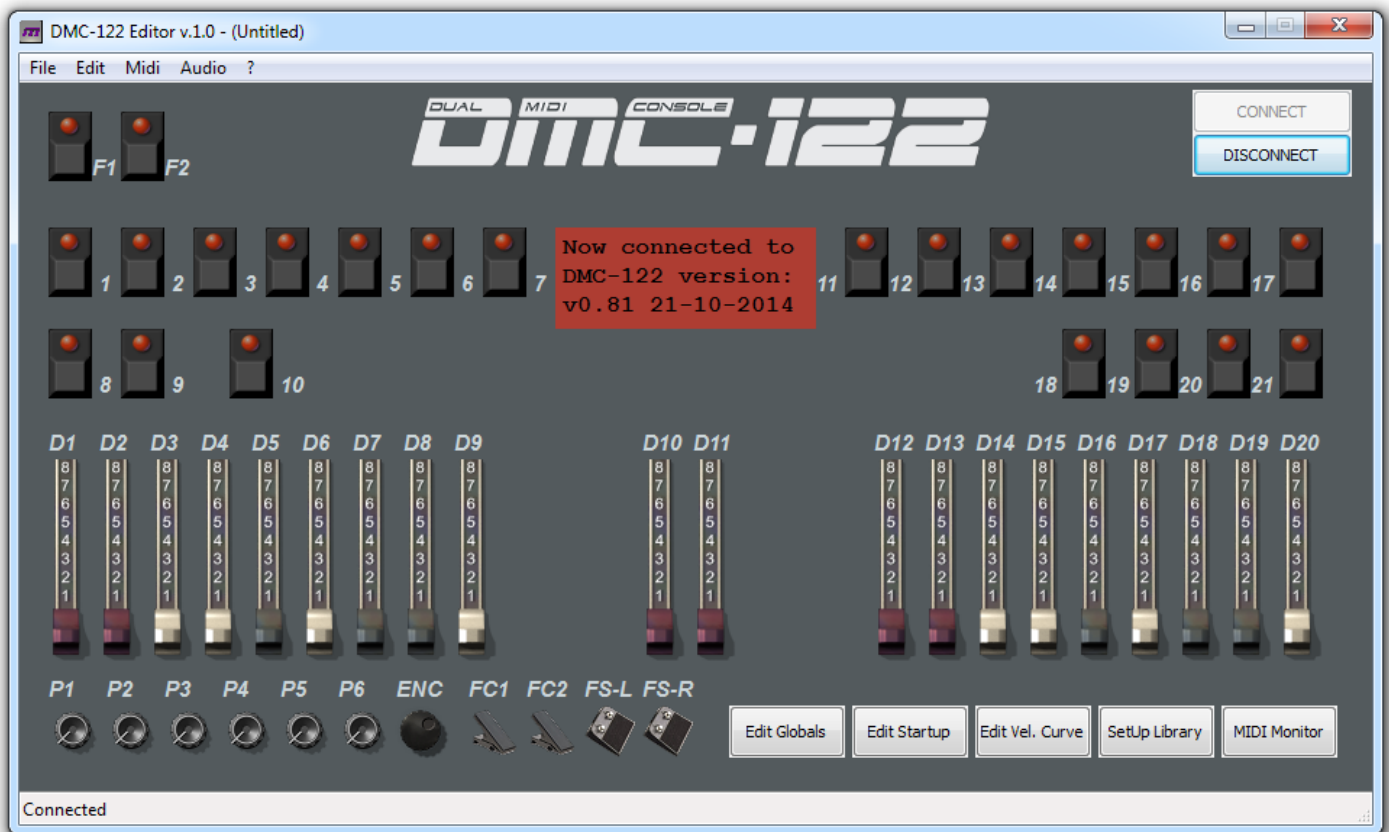
## Installation on OS X

You don't need to install the MIDI driver, just download the Editor and install it by doing the drag-and-drop of the Editor icon into your Application folder.

Now connect the other end of the USB cable to your computer and double click the Editor icon.

# STEP 4. Launching the Editor.

Launch the DMC-122 Editor. This is a powerful application that lets you configure every little bit of your new MIDI controller. This application also contains a built-in tonewheel simulation based on the GSi VB3-II.



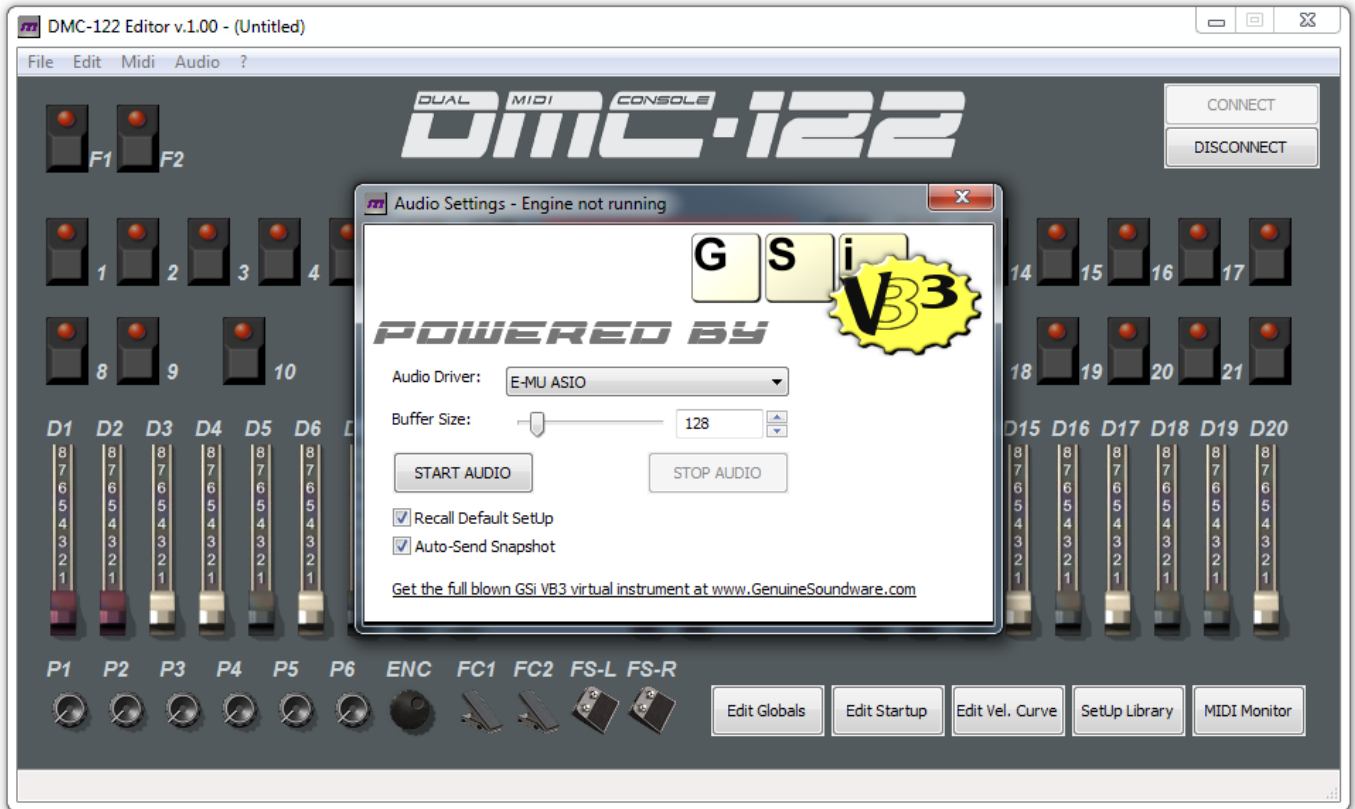
Click the button labeled “CONNECT” you see on the top right. This will activate the connection between the Editor and your DMC-122. If everything is correct, you should see a notice in the red square showing your current firmware version.

What to do if connection fails:

1. Retry clicking “CONNECT” again;
2. It's likely that the Editor didn't find the DMC-122 MIDI ports. Go to the *Midi* menu and select both the *MIDI Input* and *MIDI Output* ports, then retry to connect.
3. Double check all your connections. Is the DMC-122 powered on?

# STEP 5. Playing the built-in VB3-II.

We're almost there, just a few clicks away from experiencing the sound of VB3-II. Go to the *Audio* menu and click *Open Audio Panel*. You should see something like this:



If you're on Windows, you should have a low-latency sound card with ASIO support for better performance. If you're on Mac, make sure you have the latest soundcard drivers installed. The name of your low-latency audio device should be present in the drop-down list labeled "Audio Driver". Pick the correct one and make sure you've set a fair buffer size, not too low, not too high. 128 or 256 is the better compromise. Once you're sure you have made the best choices, click "START AUDIO". You're now ready to go!

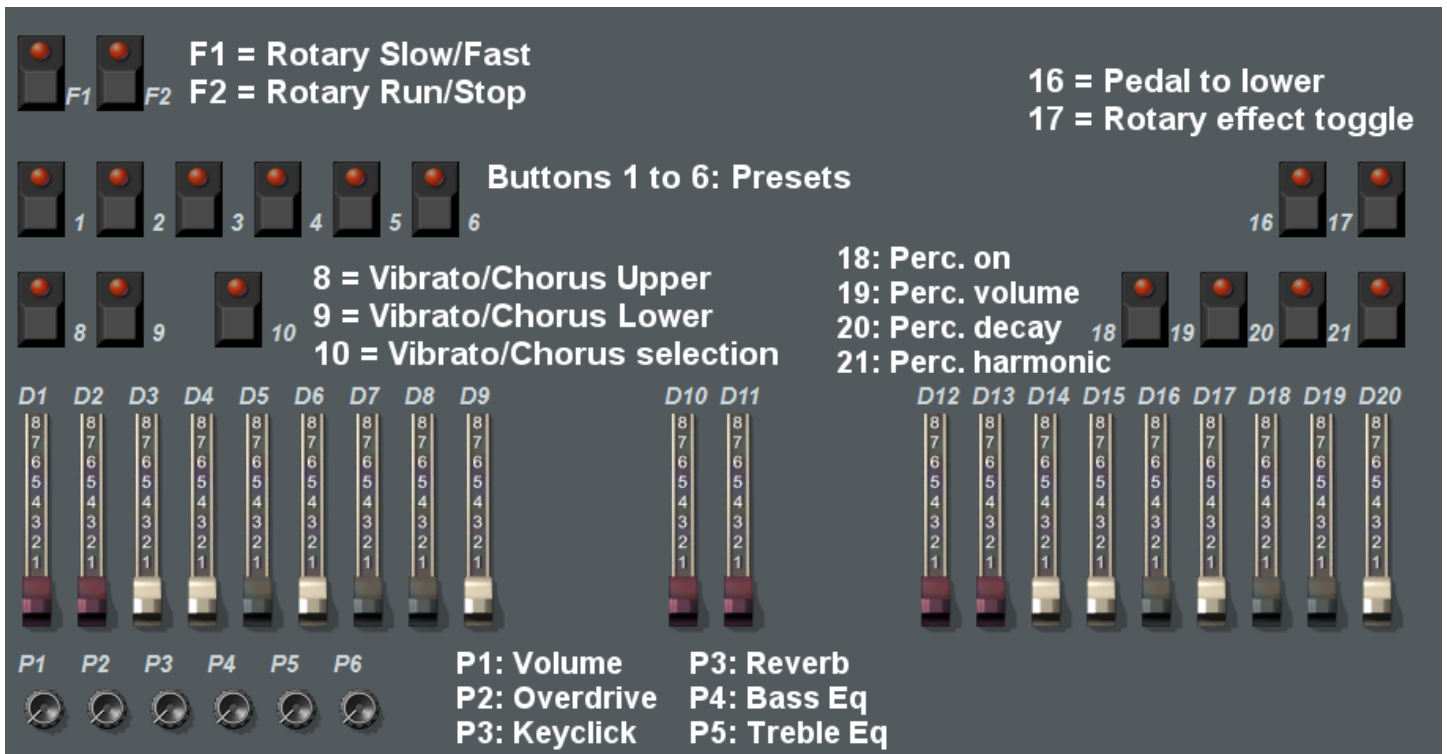
What to do if audio fails to start or if you experience pops and clicks:

1. double check your sound card driver
2. make sure you have selected the correct audio driver
3. make sure you haven't set a buffersize too low
4. check that your computer meets the minimum requirements:

Minimum requirements: any Windows or Mac computer born after 2010.

## GSi DMC-122 Quick Install Guide

The DMC-122 has room for 33 complete SetUps. Each SetUp stores every single assignment of buttons, drawbars, potentiometers, etc. The first SetUp n. 00 can't be deleted, can't be overwritten, can't be moved. It's pre-programmed to control the VB3-II sound built into the Editor and uses the USB MIDI output. The following chart shows the default assignments used in this SetUp.



If you have an expression pedal, connect it to the F.C. 2 input.

If you have an original GSi half-moon switch, connect it to the F.C. 1 input.

Presets will store all settings related to drawbars, potentiometers and buttons. To store a preset, hold the EXIT button and press the desired button numbered 1 to 6. These presets will not be held in memory unless the whole SetUp is copied and stored in a new location from 1 to 32 using the Library Editor.

The complete user's manual of the DMC-122 Editor can be downloaded from:  
<http://www.GenuineSoundware.com/Products/DMC-122>